

63 54 61  
BOTTOMLESS  
BOOZE

2 40  
BRUNCH +

71 20  
74  
BINGO

34  
ACADEMY  
\$69 BOTTOMLESS BOOZE + ALL IN MENU

15  
CORYOTINA

10

*Tina's Bingo Academy is hosted every Saturday lunch at 1pm for a 2 hour sitting.*

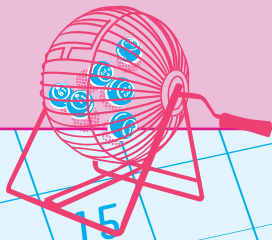
*All bookings must dine on our \$69pp brunch menu which includes 2 rounds of bingo hosted by outrageously fabulous talent, 6 dishes for the table from our brunch menu PLUS complimentary kim chi rice and edamame.*

*Additionally for your two hour sitting we'll be serving up bottomless aperol spritz, house wine, sparkling and tap beer.  
(We cater to most dietary requirements)*

*Not drinking? \$49pp for bingo and brunch.  
There's no group size too big or small.*

*For reservations please email [info@tokyotina.com.au](mailto:info@tokyotina.com.au) or call us directly on 9525 2774.*

**BOOK HERE NOW**



**TOKYOTINA**

10

TOKYO TINA

# BRUNCH MENU

SPICED EDAMAME +  
KIMCHI FRIED RICE  
ON THE HOUSE

FOOD ONLY \$49

BOTTOMLESS  
BOOZE + FOOD \$69

|   |  |
|---|--|
| <i>salmon tartare</i> (gf)                |  |
| <i>corn balls</i> (ve*)                   |  |
| <i>silken tofu, mushrooms</i> (ve*, gf*)  |  |
| <i>karaage chicken</i> (gf)               |  |
| <i>brunch special</i>                     |  |
| <i>pork belly bao</i> (gf*)               |  |
| <i>okonomiyaki</i> (v*)                   |  |
| <i>steamed snapper</i>                    |  |
| <i>charred cauliflower</i> (ve*, gf*)     |  |
| <i>roasted artichoke, walnut</i> (ve, gf) |  |

+ ADD A ROUND OF BLOODY MARY SHOTS \$5PP